

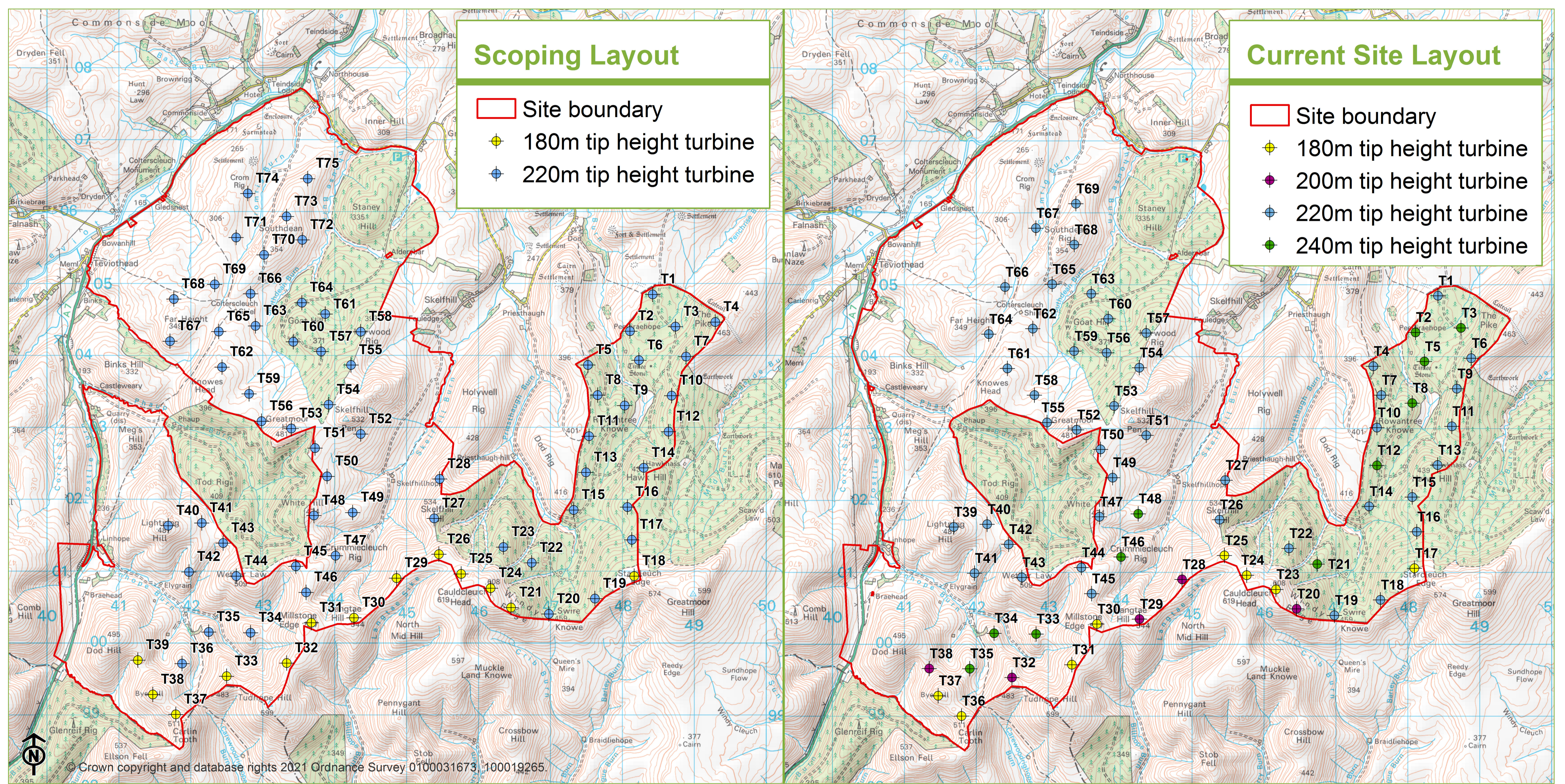
# Teviot Wind Farm

## Turbine Modifications

### Turbines

Following the submission of the EIA Scoping request in March 2021 (see **Board 14**), there have been a number of amendments made to the layout to respond to key landscape and visual sensitivities and design objectives, notably the removal of six turbines as shown in **Figure 3**, resulting in a reduction from 75 turbines to 69 turbines. This has reduced visibility of the project in views from around Teviothead (removal of Scoping Layout Turbines T67, T68, T70, T73 and T75), and consolidates the views of the proposed wind farm from the north (removal of T4). Some turbine tip heights have increased to provide uniformity in height above ground level across the site and would increase the project's energy yield.

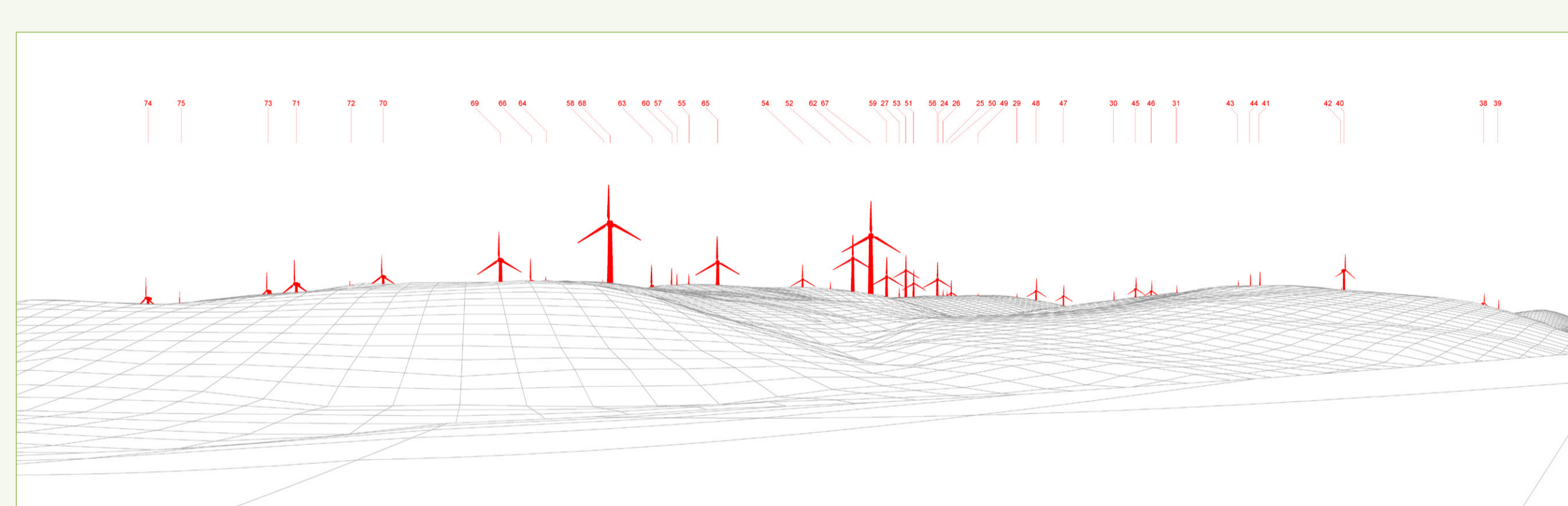
**Figure 3: Comparison between Scoping Layout and Current Site Layout**



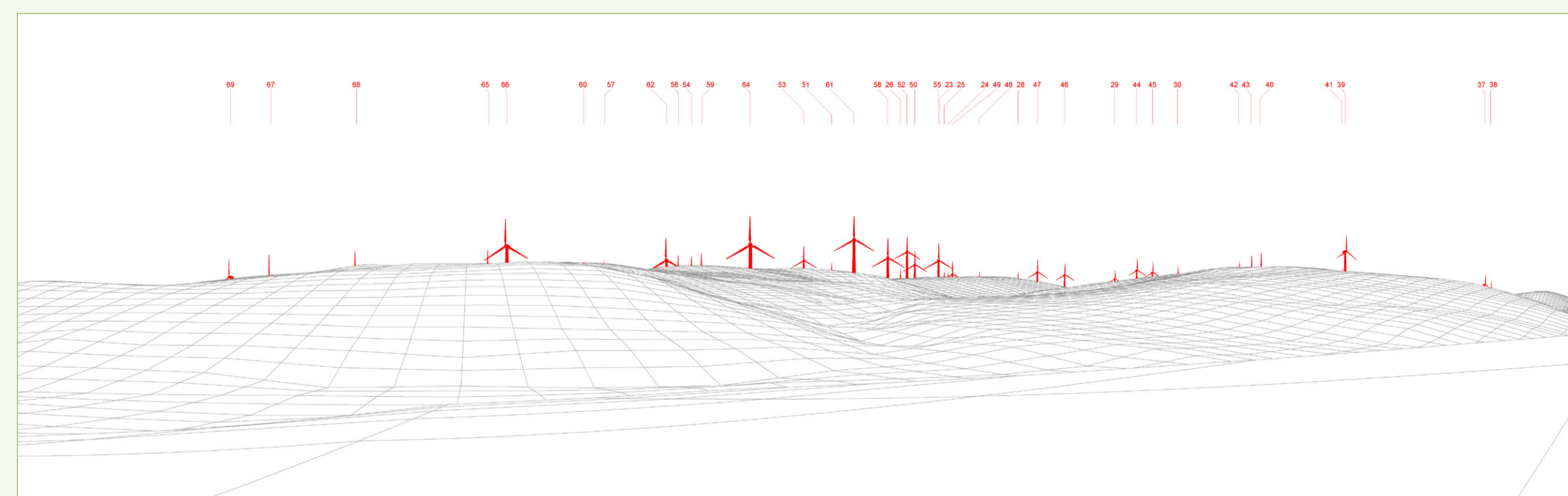
### Comparative Wirelines

The comparative wirelines shown in **Figures 4** and **5** below illustrate the positive benefits that removing the six turbines has had on views from around Teviothead and to the north of Hawick from the A7.

**Figure 4: Comparative Wireline Showing Scoping Layout and Current Layout in views from around Teviothead (Viewpoint 1).**

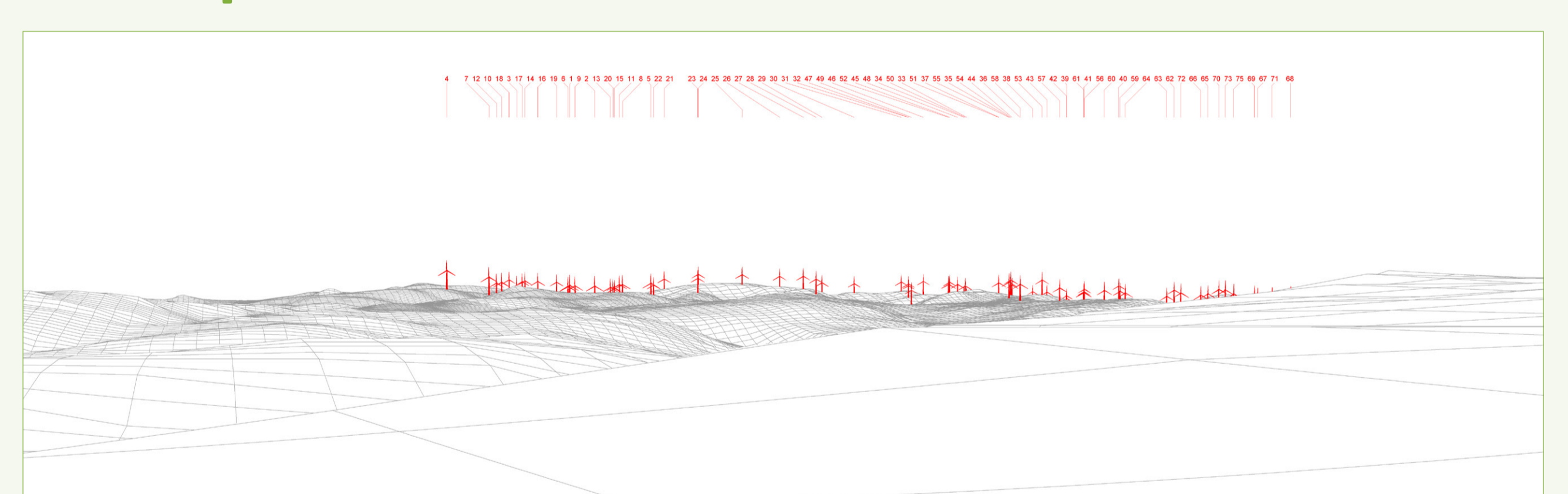


Scoping layout

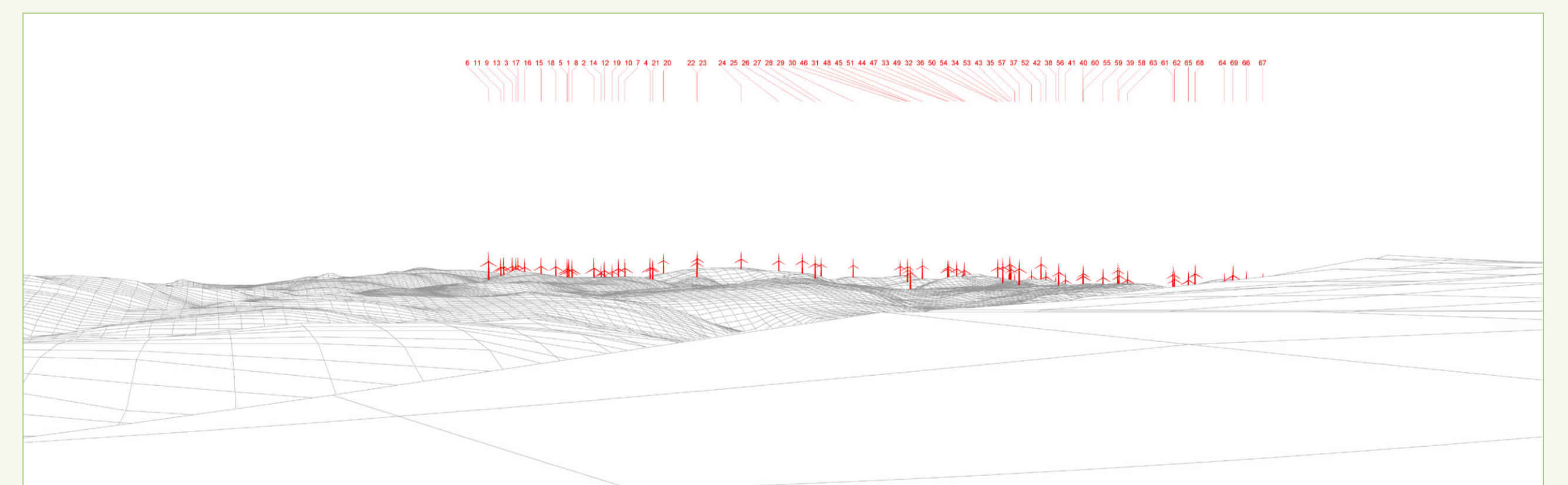


Current Layout

**Figure 5: Comparative Wireline Showing Scoping Layout and Current Layout in views from North of Hawick on the A7 (Viewpoint 4).**



Scoping layout



Current Layout

